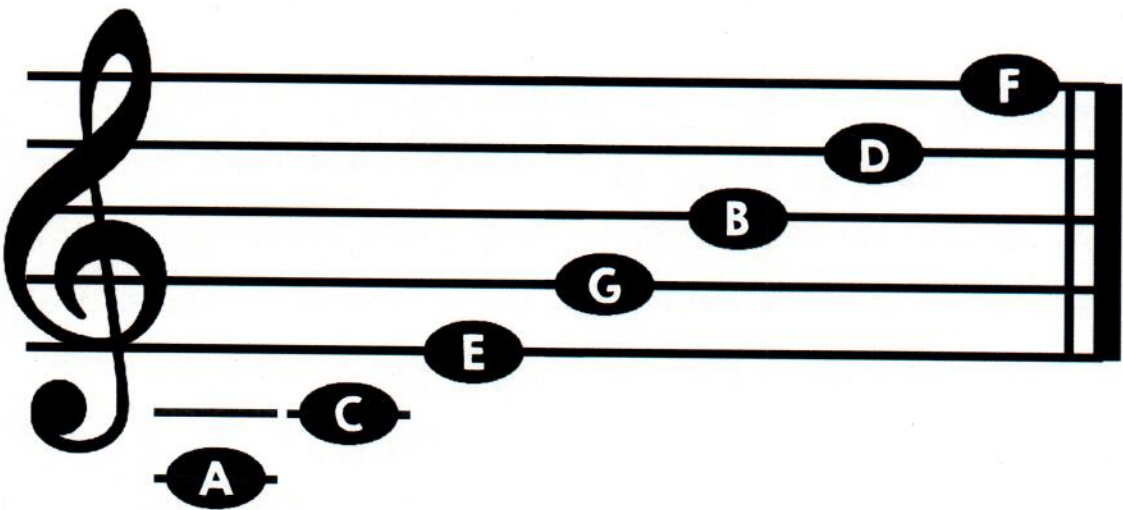
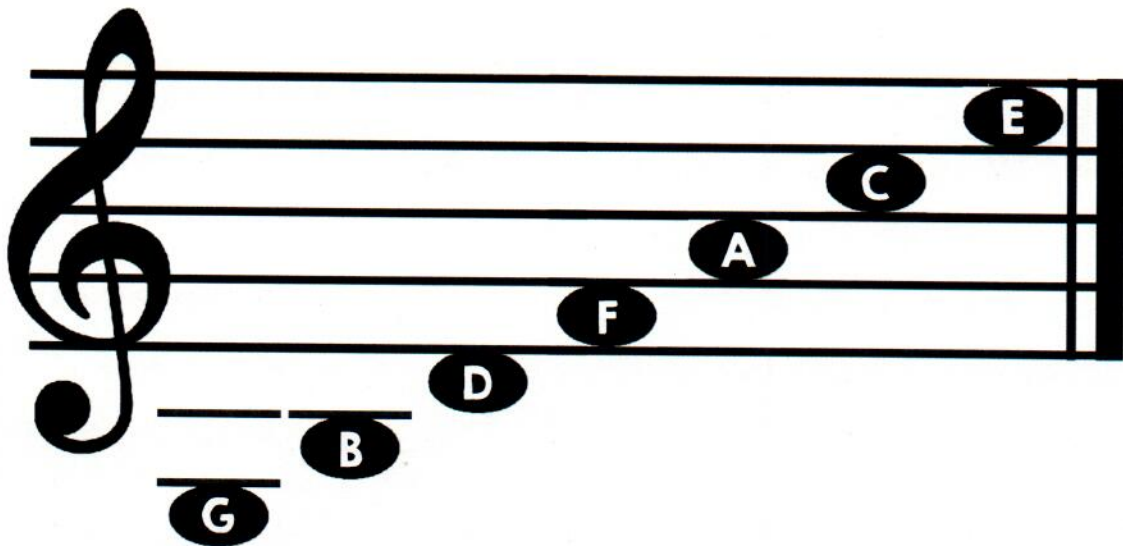


Note Names on The **TREBLE CLEF**



ian-do
me, my

1. Treble Clef Note Names

to the tune of
"Yankee Doodle Dandy"

Carolyn Welch

Swing! ♩ = ♩³

G D7 G D7

Tre-ble clef note names, sing 'em with me, five lines, four spa-ces, that's the key; F

5 G C D7 G C G

5 A C E, put your face in space, the lines on the staff are a dif-frent case.

9 C G

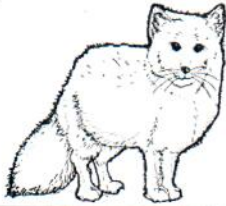
9 E, G, B, D and F, E, G, B D and F,

13 C am C7/B^b G D7 G C G

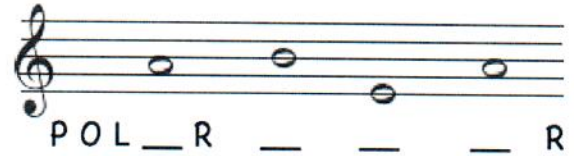
13 E, G, B, D and F, that's how it is with the tre-ble clef.

Name _____

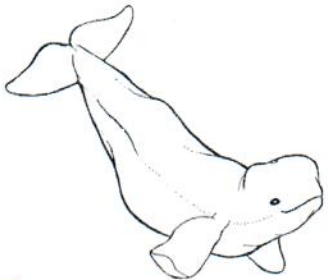
Class _____



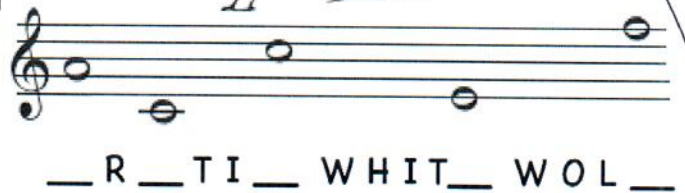
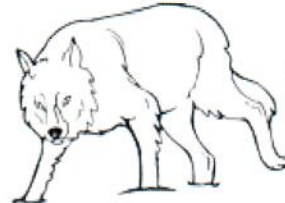
This animal has a furry white coat, short ears and fuzzy paws. Its fur is white in winter but changes to brown or gray in summer. This color change helps when hunting as blending with the environment makes it harder to be seen by prey.



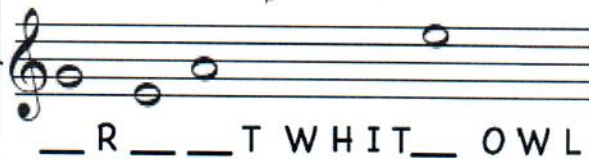
This is the largest carnivore on the planet! The only parts of its body not covered by thick, white fur are the pads of its paws and the tip of its nose.



Dark grey as a baby, this ocean dweller's skin turns very white as it grows, and a 5 inch thick layer of blubber keeps it warm in icy water. Unlike other whales, it doesn't have a dorsal fin. It also has flippers that act like paddles, and a notched tail.



Also called the Snowy Owl, this bird has very good hearing and eyesight which makes it an excellent hunter. As young owls get older, their feathers get whiter, though females are darker than males. Its native land is the arctic tundra, but they do travel to Canada, northern United States, Europe and Asia.

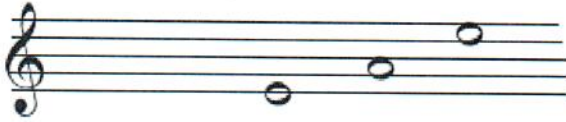


This beautiful creature is usually white with brown eyes. White fur camouflages it for hunting in snowy environments and darker irises are better for bright glare. It lives near the arctic circle and spends 5 months out of every year in darkness.



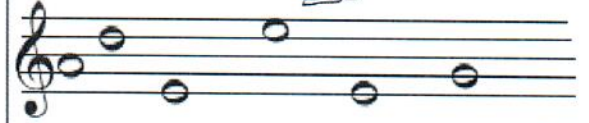
Name _____

Class _____



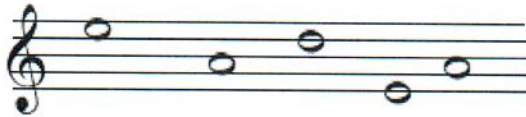
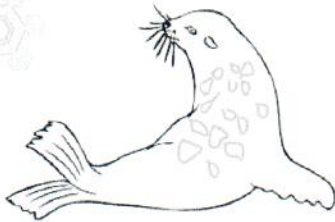
SNOWSHO _ H _ R _

This funny bird doesn't live in the arctic, but is the most common penguin in Antarctica. It has webbed feet and learns to swim at 9 weeks old. Both the male and female take turns sitting on eggs and raising their babies.



_ _ _ L I _ P _ N _ U I N

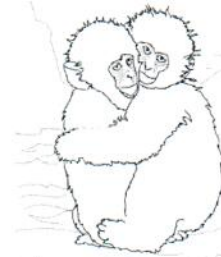
This rodent lives in North America and has very large feet that act like snowshoes. The big feet prevent it from sinking through deep snow when it hops or walks. The feet have thick fur on the bottom to protect them from the cold. Its fur is white in the winter but turns brown in summer, giving it some protection from predators.



L _ O P _ R _ S _ _ L

This fierce hunter lives in freezing cold antarctic waters. It gets its name from the spots on it's back which look like the spots on a leopard. It has long teeth, powerful jaws and lots of thick grey fur and blubber for warmth.

These primates live in a cold area of Japan where snow covers the ground much of the year. They are sometimes called Snow Monkeys and their fur gets thicker as temperatures get colder. They love to swim, huddle together in warm pools and even roll snowballs!



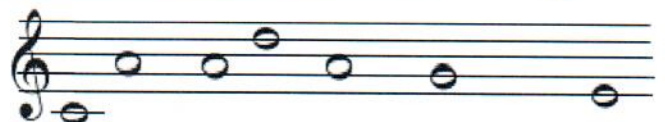
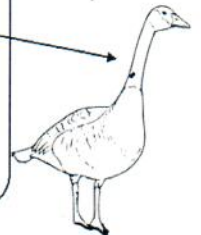
J _ P A N _ _ S _ _ M _ _ _ Q U _ _



_ _ R I _ O U

This deer is also called a Reindeer. It lives in colder, northern areas of North America, Europe, Asia and Greenland. It is the only type of deer in which both males and females have antlers, but only some females have them. When the first snow falls they move south to slightly warmer climates.

This waterbird can be found all over the world but is native to North America and Alaska. Its long neck, tail and head are black and its body is usually brown with white markings. It flies very well and sometimes migrates almost 1500 miles!


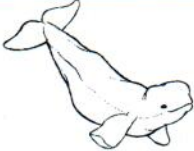

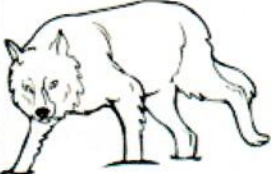





_ _ _ N _ _ _ I _ N _ _ O O S _ _

Winter Animals Answer Key

Page 1

Page 2

	Polar Bear		Snowshoe Hare
	Arctic Fox		Adelie Penguin
	Beluga Whale		Japanese Macaque
	Arctic White Wolf		Caribou
	Great White Owl		Leopard Seal
			Canadian Goose