

# W O U R Library

**Center for Expanding Horizons**



# Your Help is Needed

Milton's Public Library represents a community-wide commitment... a commitment to quality.

With the purchase of the former Shaw Memorial Library building, the Milton Public Library will soon be able to relocate, moving from the 700 sq. ft. storefront building to the 8,000 sq. ft. renovated facility.

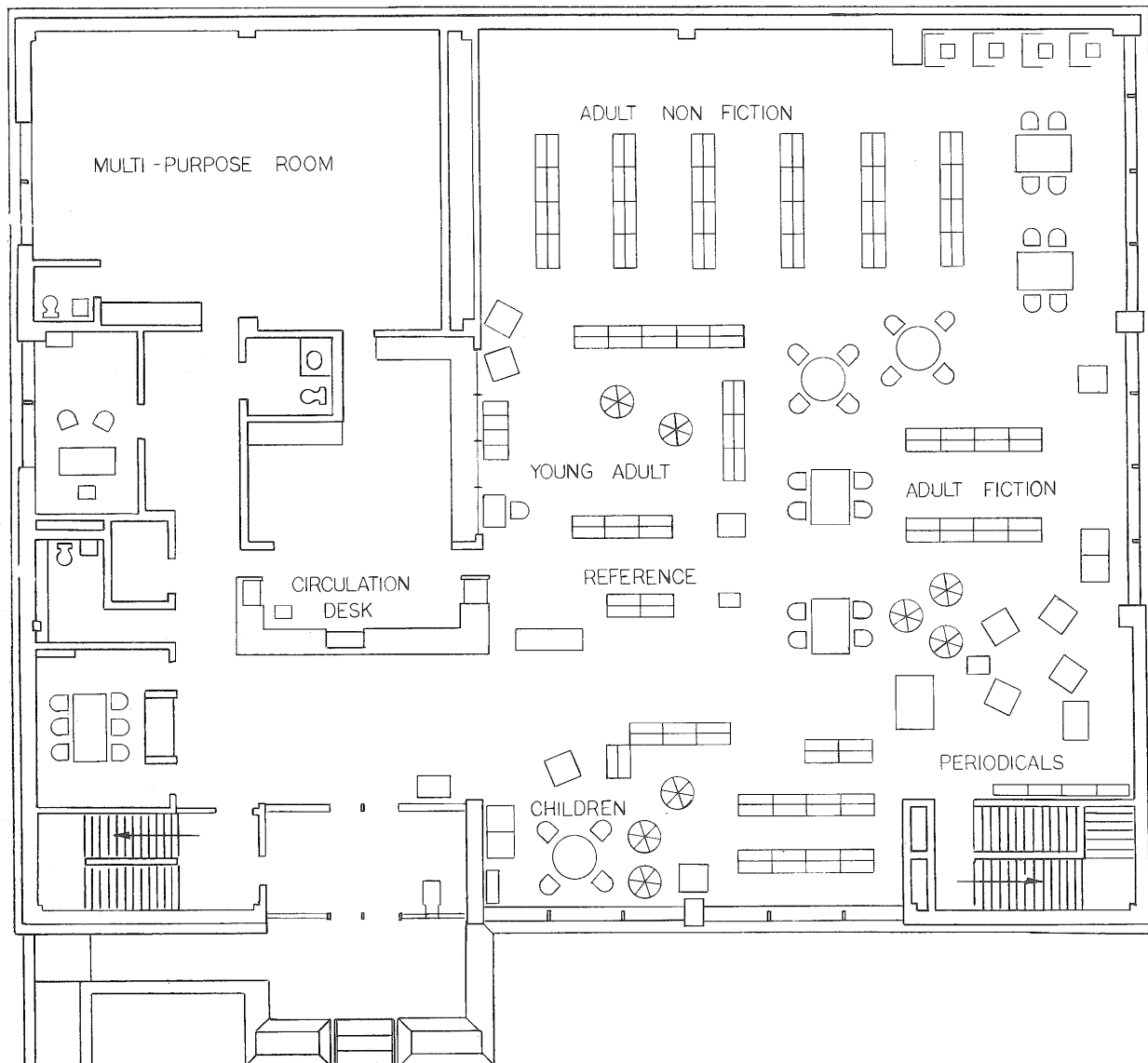
The Milton Public Library Foundation has assumed the task of furnishing the new facility, at an estimated cost of \$65,000, and another \$25,000 has been earmarked to update the library collection and finance specific projects. All total, \$90,000 is needed.

The Foundation is seeking monetary support from several sources:

1. Individual citizens
2. Businesses in Milton and those employing Milton residents
3. Foundations and corporations

It is hoped that all \$90,000 can be raised this fall, eliminating the need for additional fund drives in the future.

A good local library is a positive resource for everyone. As our facility grows, so grows the community-wide commitment to make it an even stronger asset for the people of Milton and a source of pride for the community.



The detailed floor plan displayed above illustrates the future Milton Public Library, complete with furnishings. A total of \$90,000 will be needed to furnish the 8,000 square foot facility, formerly known as the Shaw Memorial Library, and

update the library collection. All contributions should be sent to the Milton Library Foundation.

# Our Goal... \$90,000

The Milton Public Library Foundation Fund Drive is now officially underway, striving to reach a goal of \$90,000 by November 15, 1985.

Milton area residents are being asked to help the Foundation reach that goal, by contributing \$5, \$5,000 or even more. Whatever you can afford will be appreciated.

All contributors will be permanently recorded at the library and contributors of \$100 or more will be recognized on a plaque. All donations are tax deductible.

## The following is a breakdown of library needs:

\$65,000 - furnishings  
\$25,000 - updating the library collection/  
projects

### FURNISHINGS & CARPETING

Shelving (Total) - \$29,323  
Tables - \$675 each  
Study Chairs - \$110 each  
Leisure Reading Chairs - \$300 each  
Carpeting - \$10,000-\$15,000

### AREA COSTS

Adult Services Area - \$4,405  
Browsing Area - \$5,165  
Adult Seating - \$23,870  
Children's Area - \$16,844  
Young Adult Area - \$1,920

Make checks payable to: Milton Public Library Foundation  
Mail to: P.O. Box 116, Milton, WI 53563



Surveying the future Milton Public Library are: Librarian Mary Nagel, Milton Library Foundation President Milton Whitford, Mayor Bruce Curlier, and Foundation Members Ann Hill, Judy Van Rens, Solveig Carlson and Ruth Van Horn.

*We've Come A Long Way, Milton!*

In **1974**

Milton Public Library had  
nearly **5,000** books,  
subscribed to no magazines, and had a  
circulation of only **8,000**  
books.

By **1984**

Milton Public Library had over  
**11,000** books and **45**  
magazine and newspaper  
subscriptions. Over **29,000**  
books, magazines, records and other  
library materials were checked out.

In **10** years, we've doubled our  
book collection (up **234** percent).

And more than tripled our circulation  
(up **349** percent).

We've added typewriters,  
videocassettes, records, super 8 films, a  
videocassette player, 16 mm and super  
8 projectors, cassette players, and  
framed art.

In 1974, we were open

only **18** hours per week.

In 1984, we were open **53.5**  
hours per week

(up **300** percent). In 1985, we  
expanded to **56** hours per week.

We've linked ourselves to other libraries  
in the county and state and improved  
our administration with the use  
of a microcomputer.

If you haven't checked us out lately,  
we've come a long way, Milton!

(If You Like Our Numbers, Come In  
And See Our Words and Pictures!)

**Milton Public Library**

# We Share a Dream . . .

For more than a decade, we have shared a dream. . . a dream of a library with ample room for young and old alike, room to allow for leisurely reading in a comfortable setting, room for research and the materials needed to promote learning.

With the recent purchase of the former Shaw Memorial Library building by the City of Milton, we are close to fulfilling that dream. We need your help to succeed.

You have an opportunity at this time to make a strong impact on the quality of life in this area for years to come.

While the City of Milton has purchased the building, the Library Foundation has assumed

the responsibility for purchasing the interior furnishings. Through your contributions, this will be possible.

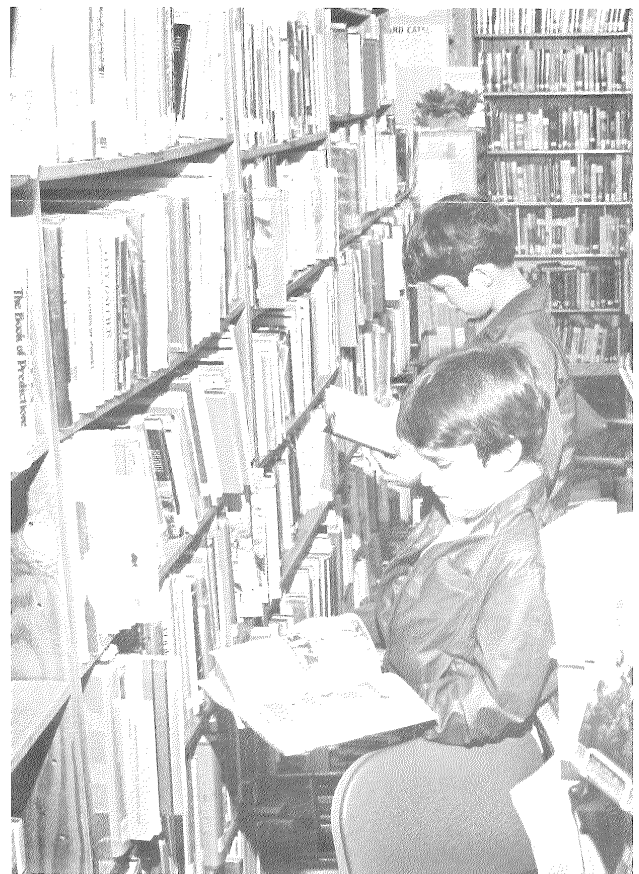
We encourage you to be generous now so that you may take advantage of your gift for years to come.

When persons are bound together by a common cause, goals can be achieved. We invite you to join us in a venture that will help make our library - a center for expanding horizons.

Campaign coordinators,  
Solveig Carlson  
Judy Van Rens



**Cooperation** has been the key word, as members of the Library Board and Foundation consolidate their efforts. Pictured are, left to right, seated, Becky Kordatzky, Board president; Mary Nagel, librarian; standing, Milton Whitford, Foundation president; and Mayor Bruce Curler.



**Crowded** conditions at the present Milton Public Library will be eliminated with the move to our new facility, the former Shaw Memorial Library building. There will be ample room to browse, read leisurely, or conduct research.

## Donate Now for a Promising Future. . .