

## Support Story Gardens

All donations will be grateously accepted; however, donations of \$500 or more will be recognized on engraved, decorative circles on the raised garden beds where much of the organized programming by Milton Public Library will take place for optimal exposure and recognition.

### Donor Information

Name: \_\_\_\_\_

Business (if applicable): \_\_\_\_\_

Address: \_\_\_\_\_

City, State, Zip: \_\_\_\_\_

Phone: \_\_\_\_\_

Email: \_\_\_\_\_

### Donation Information

**Payment plan options available upon request.**

I/We are willing to donate to Story Gardens as indicated below.

☐ **\$1 - \$499**  
Amount of Donation: \$ \_\_\_\_\_

☐ **\$500 - \$2,499 Level Sponsor (3.5 inch circle)**  
Amount of Donation: \$ \_\_\_\_\_

☐ **\$2,500 - \$4,999 Level Sponsor (4 inch circle)**  
Amount of Donation: \$ \_\_\_\_\_

☐ **\$5,000 - \$9,999 Level Sponsor (4.5 inch circle)**  
Amount of Donation: \$ \_\_\_\_\_

☐ **\$10,000 - \$14,999 Level Sponsor (5 inch circle)**  
Amount of Donation: \$ \_\_\_\_\_

☐ **\$15,000+ Level Sponsor (5.5 inch circle)**  
Amount of Donation: \$ \_\_\_\_\_

Is the above donation an In-Kind Donation of Material, Equipment, Plants, Labor, etc.? ☐ Yes ☐ No

If yes, please describe the donation: \_\_\_\_\_

Name for Recognition Sign: \_\_\_\_\_

Signature \_\_\_\_\_ Date \_\_\_\_\_



## Fundraising Guide

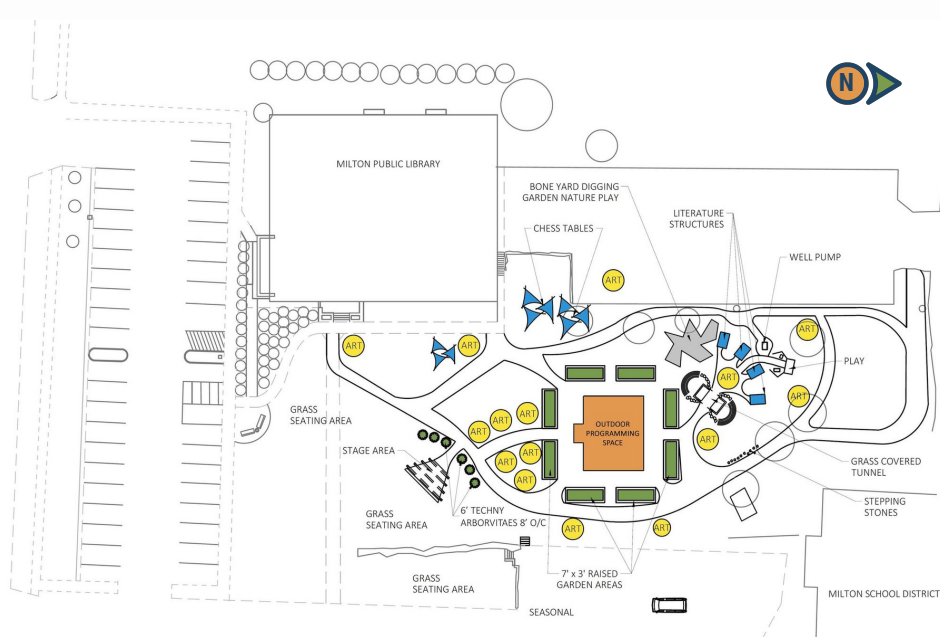


**Donate Online Today!**





## CONCEPTUAL DRAWING



## OUR VISION

While the conceptual plan above has been adjusted based on engineering and other factors, the overall mission and vision remain the same.

***"The mission of Story Gardens is to educate and enrich the community through exploration in an outdoor garden. Story Gardens is an open air branch of the library that promotes literacy and life-long learning through its literature-based themes and outdoor library programs."***

The lessons learned at Story Gardens will promote outdoor recreation and a love and understanding of nature to all those who visit.

The main feature of Story Gardens will be an outdoor programming space where staff will lead Storytimes, classes about horticulture utilizing the raised garden beds around the space, and much more. See additional details under the Facility and Programming section to the right. Ramps will be added to the north and south of the space to make it fully accessible. A walking path around the perimeter will connect the two ramps and the front and back parking lots at the library, creating another connection point for walking routes in the City. Art pieces will be incorporated into the space as well as additional gardens, educational spaces, and outdoor exploration stations. City staff is currently working with the Rock County Chapter of the Ice Age Trail Alliance to create a minor reroute to allow the trail to go through Story Gardens.

**When you make a donation to Story Gardens, you play an essential role in developing the space into a unique learning environment for all ages.**

If you would like more information about the plans for Story Gardens, please contact Library Director Ashlee Kunkel at (608) 868-7462 or by email at [kunkel.ashlee@als.lib.wi.us](mailto:kunkel.ashlee@als.lib.wi.us).

## ABOUT THE MILTON PUBLIC LIBRARY (MPL)

### Our Mission

The Milton Public Library opens doors for curious minds, nurtures learning and creativity, creates opportunities and enriches lives by bringing people and ideas together!

### Facility & Programming

The Milton Public Library, 2018 Wisconsin Library Association's Library of the Year, opened its newly renovated, award-winning, state-of-the-art facility in 2017. The library offered 507 programs with approximately 13,800 attendees in 2019, which included a wide variety of STEAM (Science, Technology, Engineering, Art, and Math) programming for all ages, from toddler to adult. With the addition of Story Gardens, the library's programming can be taken outdoors.

The library staff envision using Story Gardens for interactive, hands-on classes for all ages to explore horticulture, the farm-to-table movement, local plants, pollinators and other bugs, Earth-friendly crafts, recycling, and more. Besides holding library programs such as Storytime, the outdoor programming space will allow staff and community members to provide visitors to the Milton Public Library a wide-variety of entertainment, from music, to plays, to presentations, and more.

The library will also create a special book collection to further supplement the education and knowledge gained from exploring Story Gardens.